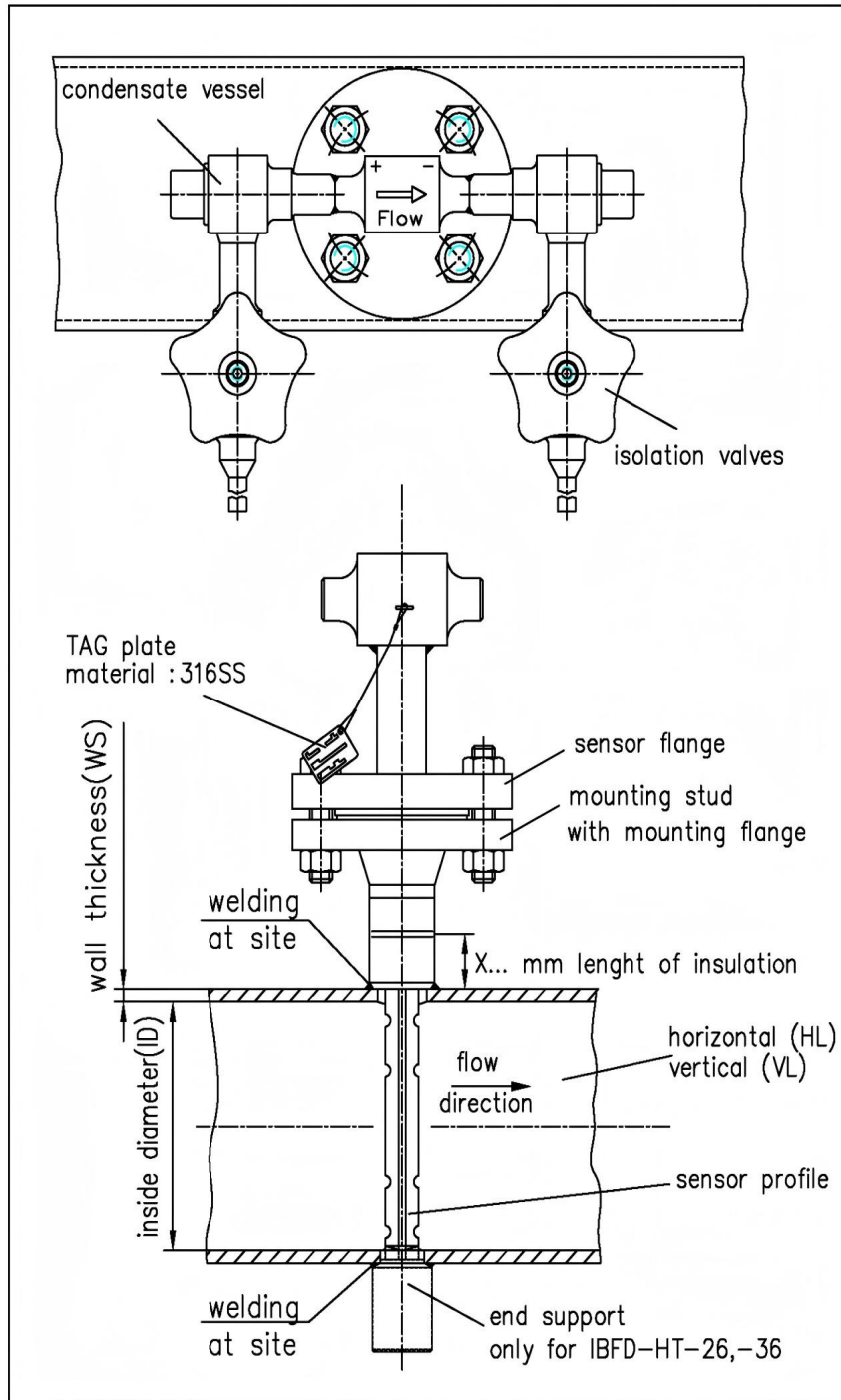


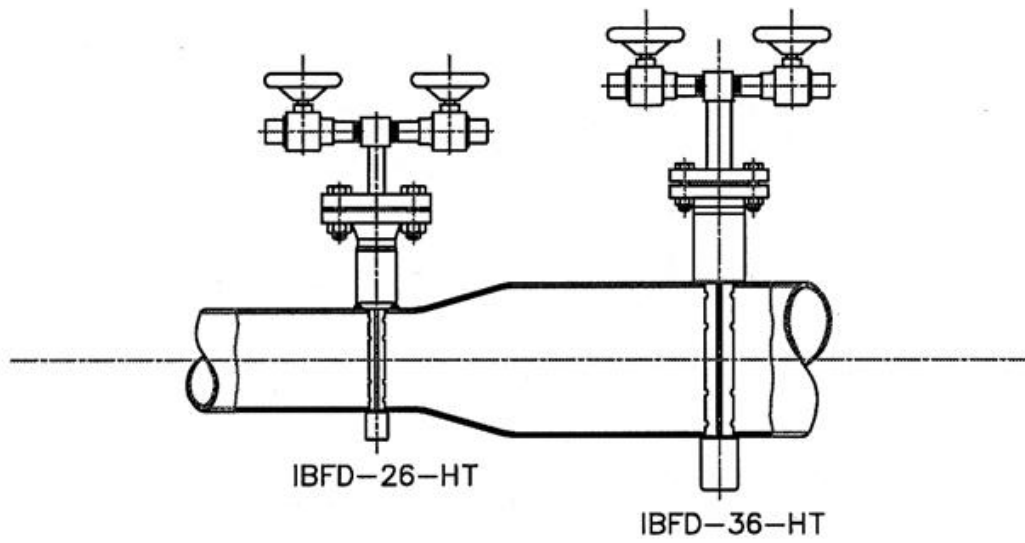
## Itabar Pitot Tube-IBFD-HT

### Technical data

Flanged process connection
High temperature design
PN16-PN400 150lbs-2500lbs
DN40-DN1000 11/2"-32"
Sensor Sizes: 20/25/35
T max.: 650°C / 1202F
End support as an option
Condensation pots
Sensor material: AISI 316Ti 16Mo3; 13CrMo4.4; 10CrMo9.10; X10CrMoVnb91.

b) Drawing for IBFD-HT





Pipe ID DN	Pipe ID Inches	Max. allowable volume flow m <sup>3</sup> /h	
		IBFD -26-HT	IBFD -36-HT
100	4	1103	---
125	5	1456	---
150	6	1810	---
200	8	2516	---
250	10	3286	---
300	12	4119	4501
350	14	4925	5399
400	16	5706	6300
500	20	7341	8018
600	24	8948	9716

